

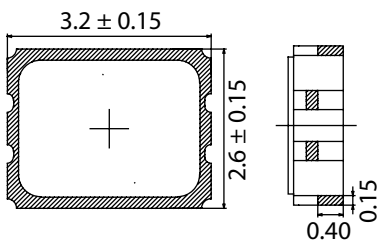
ELECTRICAL SPECIFICATIONS

PARAMETERS	SPECIFICATIONS			UNIT
HEC PART NUMBER	HE-SMO-3233	HE-SMO-323	HE-SMO-322	
FREQUENCY RANGE	0.75 ~ 80.0 MHz			MHz
FREQUENCY STABILITY	±25 PPM, ±50 PPM, ±100 PPM			PPM
OPERATING TEMP RANGE	0°C to +70°C (-40°C to +85°C)			°C
INPUT VOLTAGE	3.3V ± 5%	3.0V ± 5%	2.5V ± 5%	V
INPUT CURRENT	7mA max (20 MHz) 13mA max (40 MHz) 19mA max (60 MHz) 24mA max (75 MHz)		5mA max (20 MHz) 9mA max (40 MHz) 11mA max (60 MHz) 14mA max (75 MHz)	mA
OUTPUT LOAD	HCMOS / 15pF			
RISE & FALL TIME	10ns max			
DUTY CYCLE	40 / 60			%
TRISTATE	Enable/Disable optional			
JITTER	50ps (peak to peak) RMS Max			ps

PART NUMBERING GUIDE

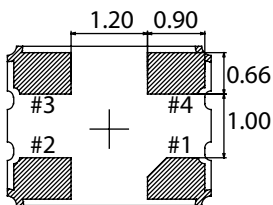
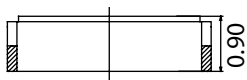
HE-SMO-32	VOLTAGE	STABILITY	TEMP RANGE	- FREQUENCY	- OPTIONS
HE-SMO-32	3 = 3.0 V 33 = 3.3 V 2 = 2.5 V	A = ±30 PPM B = ±50 PPM C = ±100 PPM	BLANK = 0°C to +70°C E = -40°C to +85°C	ENTER FREQUENCY	ENTER CUSTOM OPTIONS

MECHANICAL DRAWING



TERMINAL CONNECTION	
#1	INH
#2	GND
#3	OUTPUT
#4	+Vcc

Solder Reflow Temperature: 260°C, 10 seconds max.



+/- 0.1 mm

ENVIRONMENTAL CONDITIONS

PARAMETER	SYMBOL	FREQUENCY	TEST	SPECIFICATION
Shock Resistance	ΔF/F	1 ~ 10 MHz	5000g, 0.3ms, 1/2 sine	±5 PPM
Vibration Resistance	ΔF/F	1 ~ 10 MHz	20g, 10~2000 Hz	±5 PPM
Moisture Sensitivity Level	MSL	1 ~ 10 MHz	1	CONFORMS