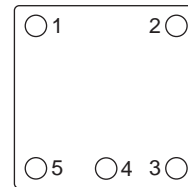
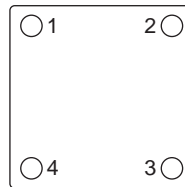
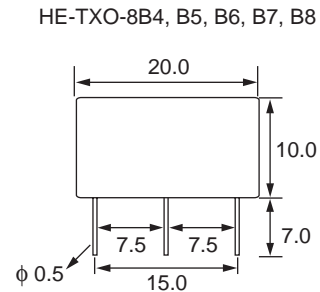
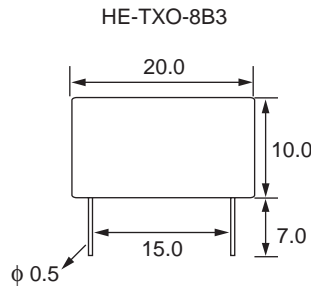
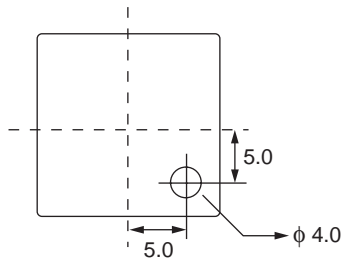


ELECTRICAL SPECIFICATIONS

PARAMETERS	HE-TXO-8B3,6, 7, 8	HE-TXO-8B4	HE-TXO-8B5	UNIT
FREQUENCY RANGE	2-150	10-25	2-25	MHz
APPLICATIONS	TCXO / VCTCXO			
SUPPLY VOLTAGE	5.0 V / 3.3V Option			
LOAD ($\pm 10\%$)	TTL2	20KW // 5pF	TTL2	
CONTROL VOLTAGE	DC 2.5 (VX Option)			
NORMAL TEST TEMPERATURE	25°C \pm 2°C			°C
OPERATING TEMPERATURE	0 + 50°C / -40 + 85°C Optional		0 + 50°C / -30 + 75°C	°C
FREQUENCY STABILITY VS. TEMP	$\pm 1.0 \sim \pm 10.0$ max		$\pm 2.0 \sim \pm 10.0$ max	PPM
FREQUENCY STABILITY VS. VOLTAGE	$\pm 0.1 / V_{cc} \pm 5\%$ max		$\pm 0.2 / V_{cc} \pm 5\%$ max	PPM
FREQUENCY STABILITY VS. LOAD	$\pm 0.1 / \text{Load} \pm 10\%$ max		$\pm 0.2 / \text{Load} \pm 10\%$ max	PPM
AGING	± 1.0 PPM max			PPM
TOLERANCE	$\pm 0.3 @ 25^\circ\text{C}$ max			PPM
OUTPUT LEVEL	TTL/HCMOS	1.0 (DC 5.0V)	TTL/HCMOS	Vpp
OUTPUT WAVEFORM	RECTANGULAR	CLIPPED SINE WAVE	RECTANGULAR	
SUPPLY CURRENT	20.0	2.0 (DC 5V)	20.0	mA
FREQUENCY ADJUSTMENT	± 3.0 (by internal trimmer)			PPM
VOLTAGE CONTROL FREQ. DEV.	$\pm 5 \sim \pm 20$ MIN.			PPM
VOLTAGE CONTROL	2.5 \pm 2.0			VDC

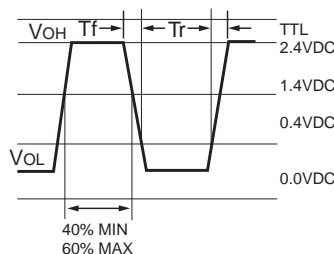
MECHANICAL DRAWING



Pin Connections:

PIN	B3	B4, 5, 6	B7	B8
1	NC (TX) Vcon (VX)	GND	Vcon (VX)	GND
2	GND	GND	GND	Vcon (VX)
3	Output	Vcc	Vcc	Vcc
4	Vcc	Output	Output	Output
5		NC (TX) Vcon (VX)	GND	GND

WAVEFORM



TEST CIRCUIT

